

# ALFATEC® Hubsysteme / Lift systems

## 2-Säulen Riemenheber

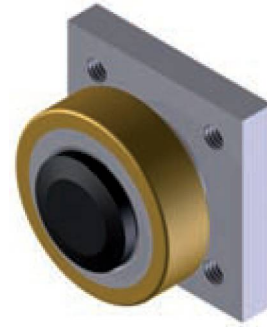
Traglast	200 kg
Hubhöhe	800 mm
Geschwindigkeit v	1.0 m / s

mit Steuerung

## 2-pillar belt lifter

Load capacity	200 kg
Height of stroke	800 mm
Speed v	1.0 m / s

with electric control



AS 060.0360

